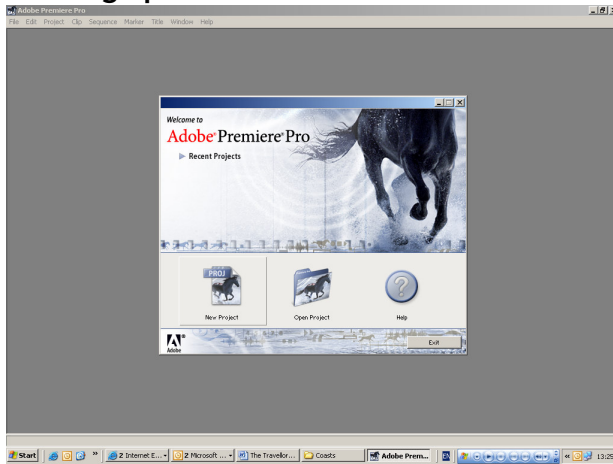


# An intro into using Adobe Premier



## Starting up Premier



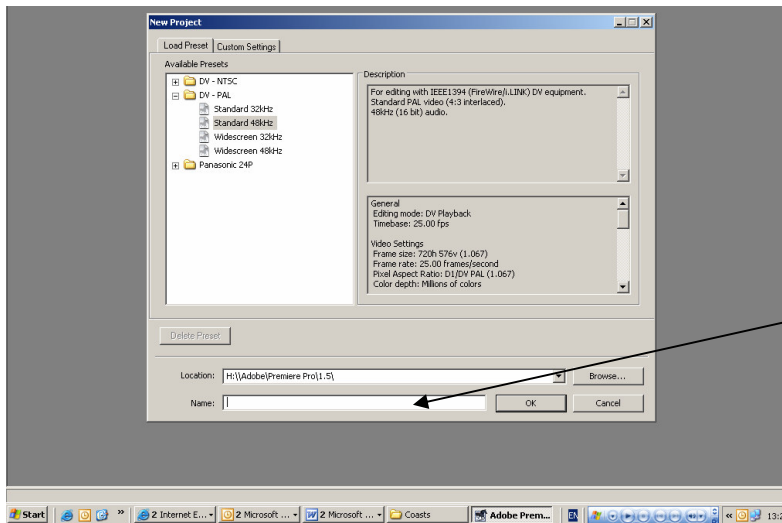
Window A

Adobe Premier is a great platform in which to edit film. It provides the user with lots of options and is very flexible. Premier is often used by industry specialists which although show the quality the package can produce does mean that it can often be confusing and quite technical.

When you open the software you should see a screen which asks you if you want to open a new project or work on previous work.

By clicking on the new project option window B will appear. This is where you decide on the output of your project (NTSC or PAL), can name your project and decide where it will be saved.

NTSC is the standard filmmaking type in North America, where PAL is the system we use in the UK. Your machine should automatically default to standard 48Hz if you are working at the CLC

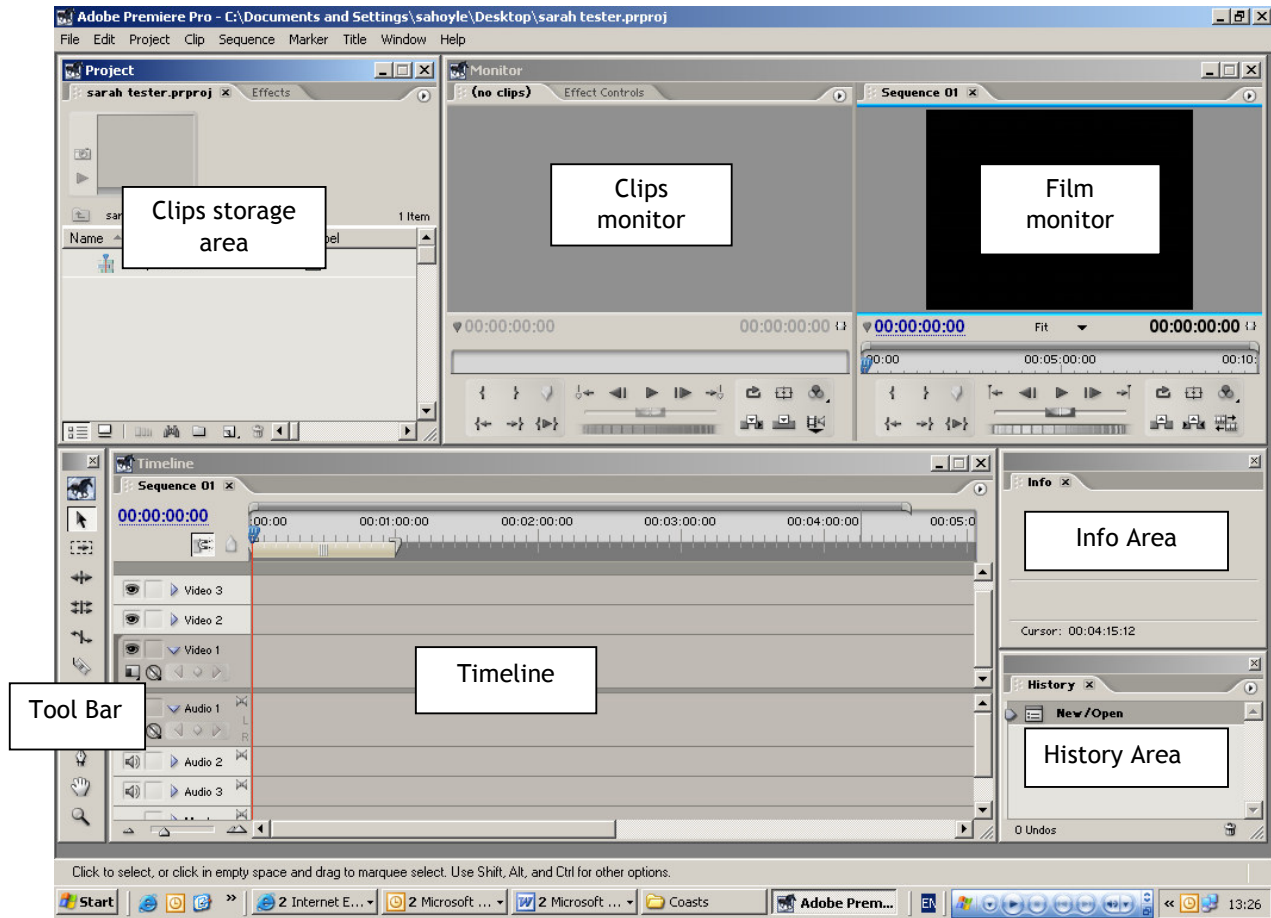


Type the name of your project in here

Window B

After entering a project name and pressing OK a new project should open up.

There are quite a few parts to the Premier Interface. There is an area for storing you clips (clips are stored in 'bins') an area to view clips and effects you are adding to clips, and area to view your film, a time line a history bar, and info area ( where you can see details about the clips) and a tool bar.

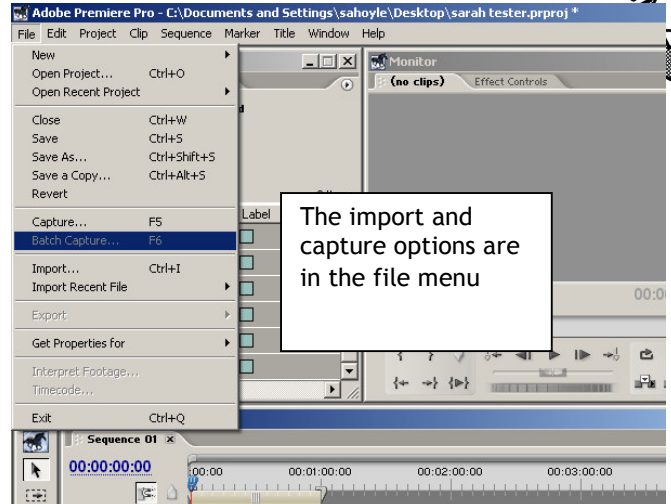


## Importing your film into Premier

You can either import files from a CD/DVD or from a computer source or directly from your camera.

To import from a CD/DVD or your computer, click on file and select import-then navigate to the files you wish to download.

To import directly from a camera you need to capture or batch capture. Capturing will allow you to select certain parts of your film into premier. Batch Capturing will select larger parts into your film.



## Using the timeline

Once your clips have been imported or captured, to put them in your film you will need to drag the clips into the timeline. This is a very simple drag and drop.

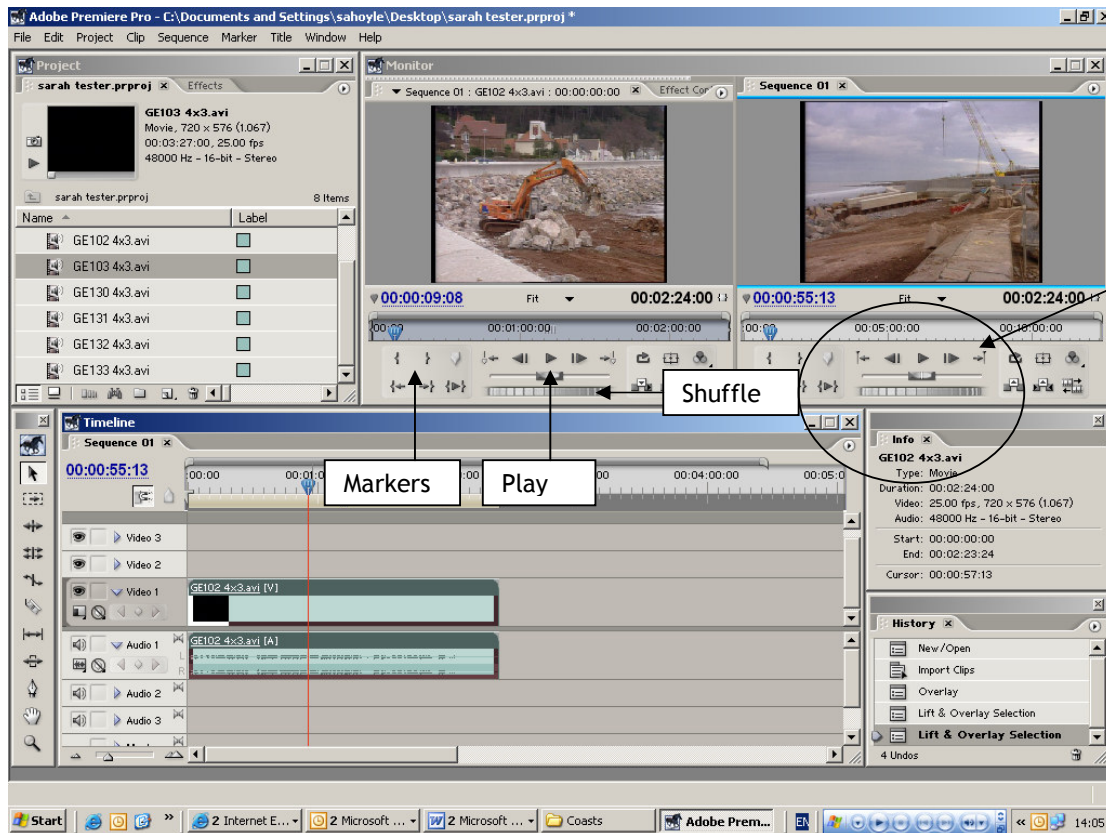
Once dragged, the clip should drop into the Video 1 track with the Audio matched in the Audio 1 track. As with most editing packages, in Premier it is possible to split the audio from the visual and vice versa. This enables you to do simple effects such as putting narration on your film.

When your clip hits the timeline you should be able to see the clip in the film monitor (its becomes part of the film when in the timeline). If you double click on the clip you should also be able to see it in the clip monitor.

The purpose of the clip monitor is to give the editor (you) a chance to preview your clip before it goes into the timeline. You can fast forward, rewind, pause the clip, shuffle through frames and add markers and more. All these preview features can also be found on the film monitor



The functions preview functions for the film monitor are the same as the clip monitor



### Adding Effects

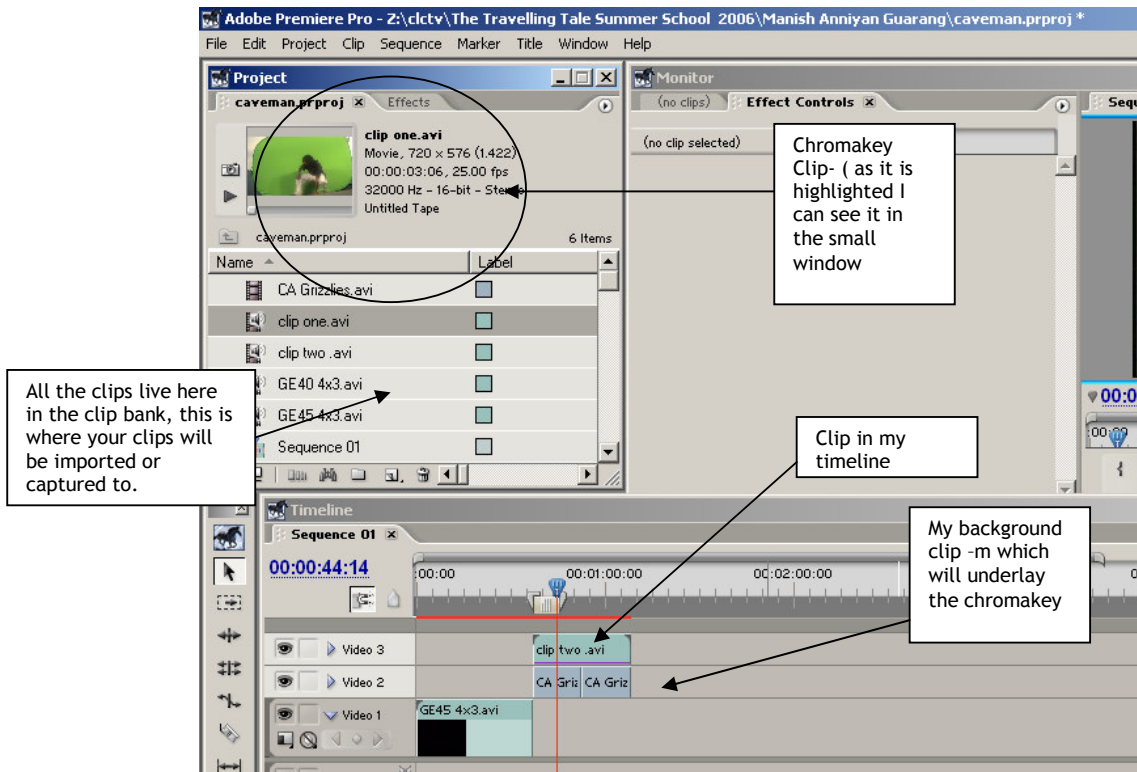
To find effects click on the effects tab which is located in the clips storage area. Once selected this will open up a massive selection of effects. This is where the playing starts. With Premier you will need to experiment as the range of effects is very comprehensive.

Remember filmmakers are storytellers - don't add too many effects that may detract from your story ! - for a sheet of effects ideas see appendix

### Using Chroma key

If you have access to a chroma key screen this effect is brilliant. You can transport yourself to deepest Russia , hang out in the rainforest or sun your self on the beach all by adding alternative back grounds to your film.

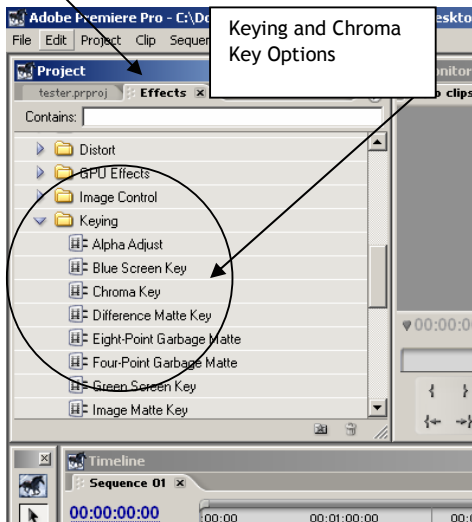
- The first step is to film yourself against a chroma key background.
- Import or capture the footage into Premier
- Add the clip to your timeline



- Find another clip or footage you would like as the background - this is where you put your rainforests, desert beach or fiery volcano!
- Import the background clip into Premier
- Add the background clip to your timeline
  
- Ensure the clip which you want to chroma key is above the background clip
- Select the Keying option from the effects panel,
- Select Chroma key
- Drag this effect onto the clip you wish to chroma key

Effects  
tab

## n's Guide to Using Premier

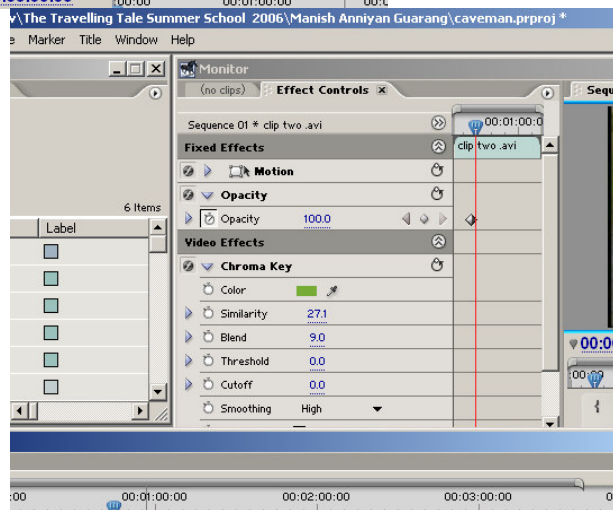


Keying and Chroma  
Key Options

Eyedropper tool

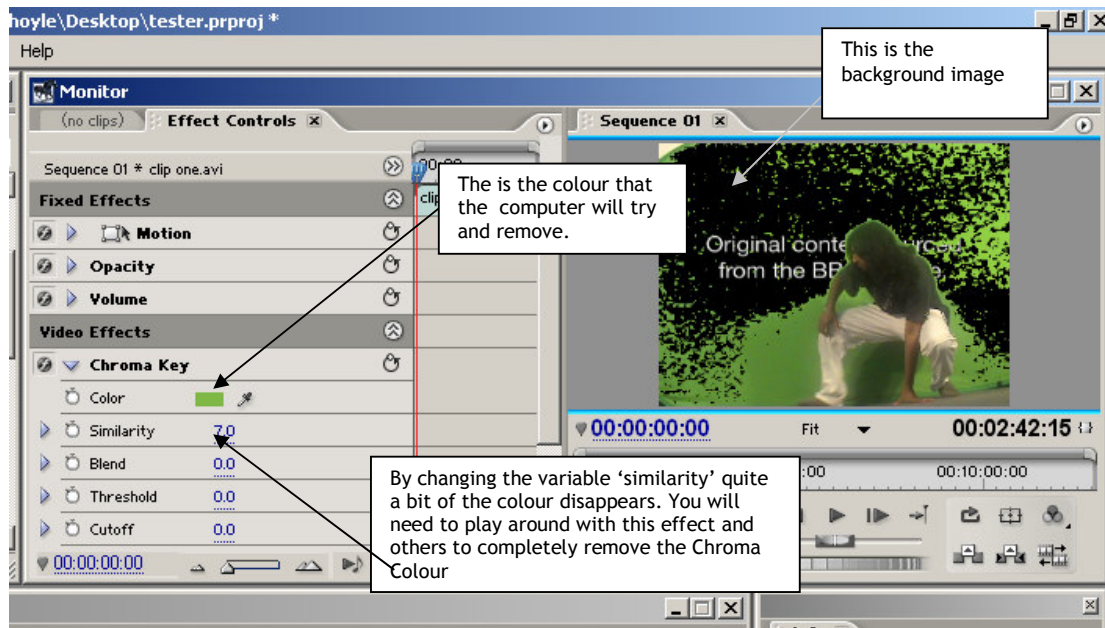


The effects control can be found  
just behind the clip monitor tab



Head to the Effects Control and change the Chroma key variables. The Chroma key process is a bit like using the magic wand tool in Adobe Photoshop. Once you have selected the Chroma key colour that you want to erase, Premiere will pick up all similar colours.

- To select the chroma key colour, use the eyedropper tool. Click on the dropper and hold it over the colour that you wish to erase.
- This colour should then appear in the colour box



## The Adobe guide to Chroma Key effects and what they do.

Use the Chroma key to select a color or a range of colors in the clip to be transparent. You can use this key for a scene shot against a screen that contains a range of one color, such as a shadowy blue screen. Select a key color by clicking the Color swatch or by dragging the eyedropper to a color in the Monitor window. Release the mouse button only when the eyedropper is over the color you want, as indicated by the swatch next to the eyedropper.

Adjust the following Chroma key settings as necessary:

### **Similarity**

Broadens or reduces the range of color that will be made transparent. Higher values increase the range.

### **Blend**

Blends the clip you are keying out with the underlying clip. Higher values blend more of the clip.

### **Threshold**

Controls the amount of shadows in the range of color you keyed out. Higher values retain more shadows.

### **Cutoff**

Darkens or lightens shadows. Drag to the right to darken shadows, but do not drag beyond the Threshold slider; doing so inverts gray and transparent pixels.

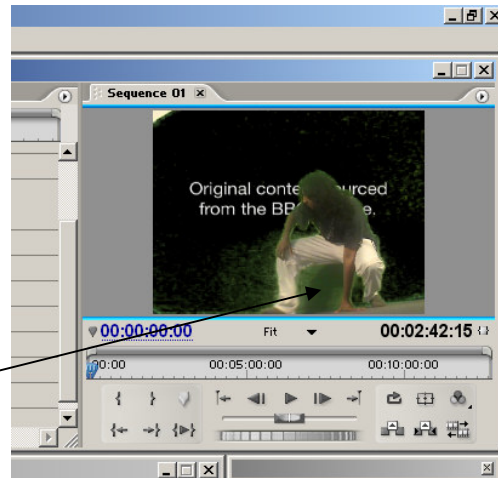
### **Smoothing**

Specifies the amount of anti-aliasing that Adobe



Top tips  
When shooting your Chroma Key footage try to avoid shadows. Shadows create different tones which Premiere can sometimes find difficult to pick up. If this happens try changing the Chroma Key colour and see if this help!

Evil Shadows !



### Useful Websites

<http://www.dvmoviemaking.com/samples.html> - an excellent guide to adding effects to film including Chroma key in a series of short video clips

[http://www.chroma-key.com/chroma\\_key\\_special.html](http://www.chroma-key.com/chroma_key_special.html) - An American site with details of how to buy Chroma key screens and accessories















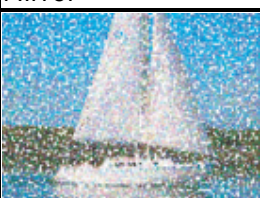










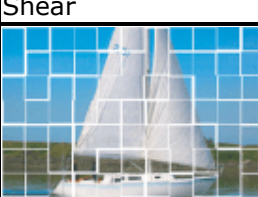


[http://www.videostudio.co.uk/chroma\\_key.htm](http://www.videostudio.co.uk/chroma_key.htm) - A useful write up as to what Chromakey is, as part of excelsior product range

## Appendix





The samples below illustrate just some of the video effects included with Adobe Premiere Pro. To preview an effect not in this gallery, apply it and preview it in the Monitor window.





Crystallize 	Directional Blur 	Edge Feather 	Emboss 
Extract 	Fast Blur 	Find Edges 	Gaussian Blur 
Original image 	Horizontal Flip 	Invert 	Lens Distortion 
Lens Flare 	Lightning 	Mirror 	Mosaic 
Noise 	Pinch 	Pointillize 	Posterize 
Radial Blur 	Replicate 	Sharpen 	Sharpen Edges 
Original image 	Shear 	Solarize 	Spherize 



Texturize	Tiles	Tint	Twirl
			
Vertical Flip	Wave	Wind	ZigZag

## Chroma Key

The Chroma Key effect keys out all image pixels that are similar to a specified key color. When you key out a color value in a layer, that color or range of colors becomes transparent for the entire layer. Control the range of transparent colors by adjusting the tolerance level. You can also feather the edges of the transparent area to create a smooth transition between the transparent and opaque areas.



Chroma Key **A.** Original image **B.** Blue color keyed out **C.** Image on second track **D.** Final composite image

---

[Previous](#) | [Next](#) | [Top](#) | [Applying Effects](#) > [Video effects included with Adobe Premiere Pro](#)